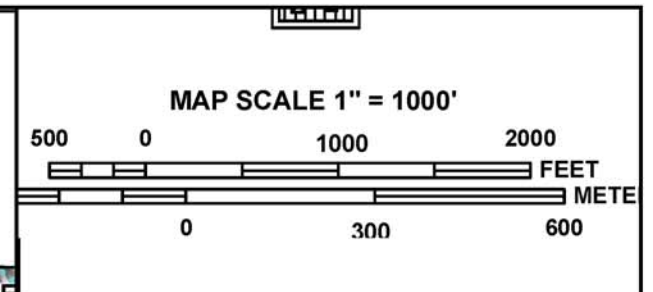
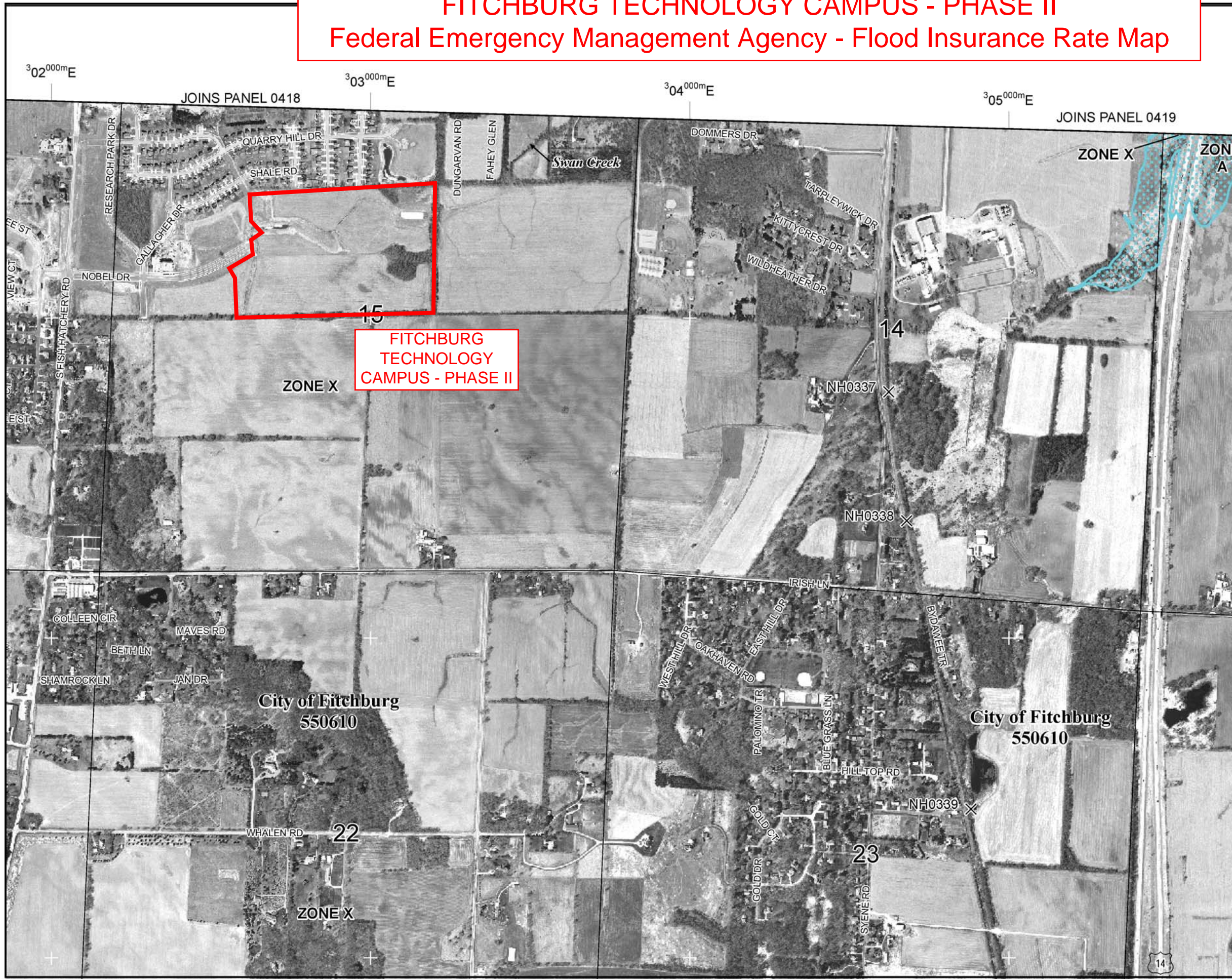


# FITCHBURG TECHNOLOGY CAMPUS - PHASE II

## Federal Emergency Management Agency - Flood Insurance Rate Map



NFP PANEL 0585G

### FIRM

FLOOD INSURANCE RATE MAP


**DANE COUNTY,  
WISCONSIN  
AND INCORPORATED AREAS**

PANEL 585 OF 850  
(SEE MAP INDEX FOR FIRM PANEL LAYOUT)

CONTAINS:

COMMUNITY	NUMBER	PANEL	SUFFIX
DANE COUNTY	550077	0585	G
FITCHBURG, CITY OF	550610	0585	G
OREGON, VILLAGE OF	550089	0585	G

Notice to User: The Map Number shown below should be used when placing map orders; the Community Number shown above should be used on insurance applications for the subject community.



MAP NUMBER  
55025C0585G

MAP REVISED  
JANUARY 02, 2009

Federal Emergency Management Agency

This is an official copy of a portion of the above referenced flood map. It was extracted using F-MIT On-Line. This map does not reflect changes or amendments which may have been made subsequent to the date on the title block. For the latest product information about National Flood Insurance Program flood maps check the FEMA Flood Map Store at [www.msc.fema.gov](http://www.msc.fema.gov)



