

CITY OF MENOMONIE ±127 ACRE INDUSTRIAL SITE

689TH AVE.

708th AVENUE

A
±68
Acres

B
±59
Acres

59TH STREET NE

C.T.H. B

POND

CONSERVANCY EASEMENT

100' DRAINAGE EASEMENT

61ST STREET NE

689TH AVE.

CITY LIMITS

61ST AVE.



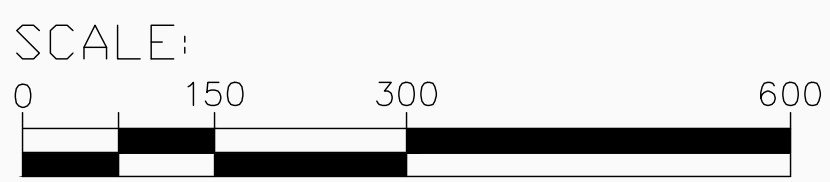
689TH AVE.

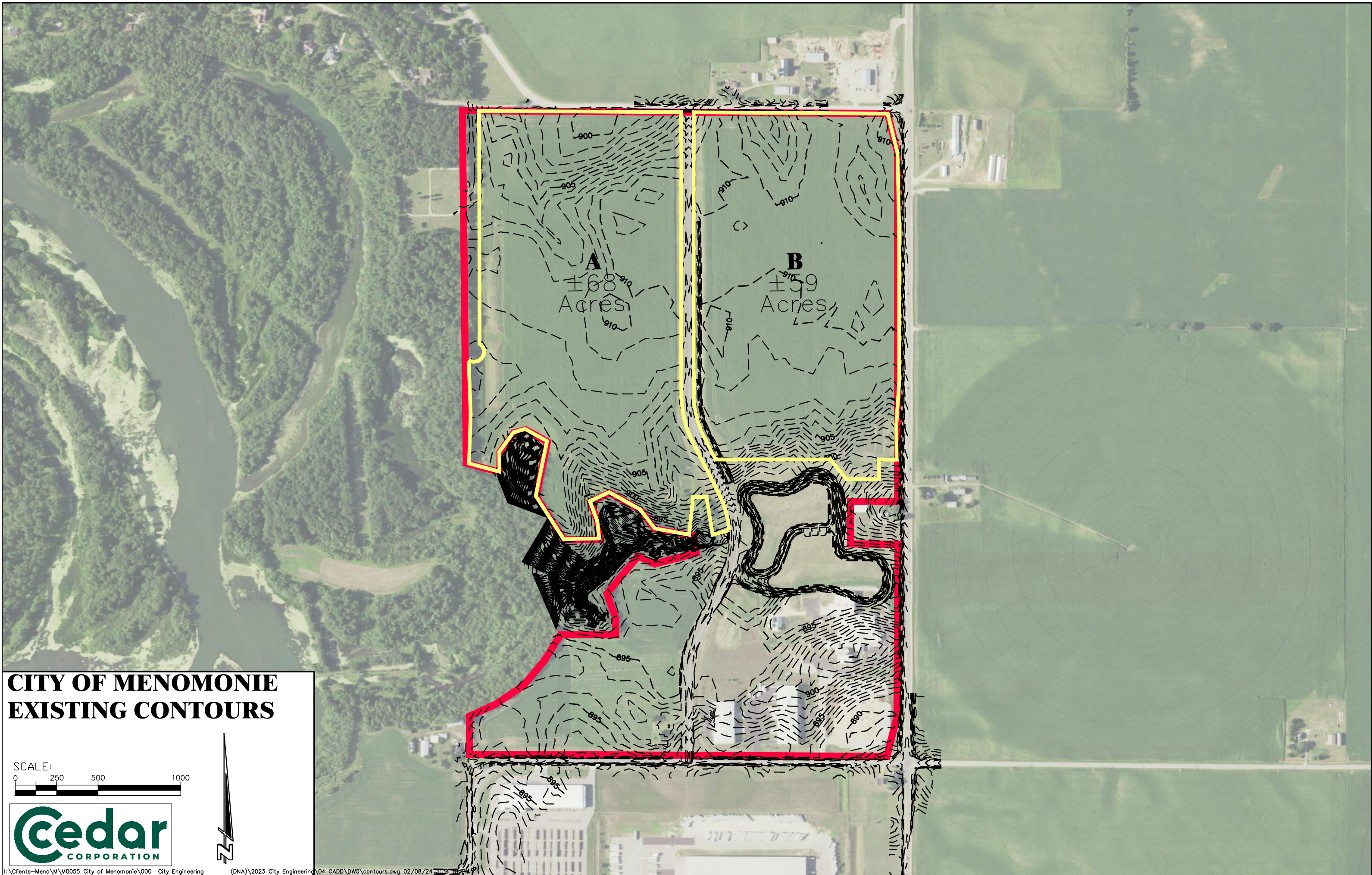
708th AVENUE

C.T.H B

**REGIONAL
STORM
POND**

CITY OF MENOMONIE





CITY OF MENOMONIE EXISTING CONTOURS

SCALE:
0 250 500 1000

