

Wisconsin was the first state to recognize Earth Day,
and remains committed to clean energy.

WISCONSIN: A HUB FOR ELECTRIC VEHICLE MANUFACTURING AND TECHNOLOGY DEVELOPMENT

Companies in the electric vehicle (EV) industry and supporting the electrification transition will find a welcoming, innovative, and collaborative home base in Wisconsin. Our tax structure, competitive incentives, and renewable energy programs are compelling for business relocation and expansion.

WISCONSIN OFFERS UNPARALLELED BENEFITS THAT SUPPORT THE ELECTRIFICATION TRANSITION.

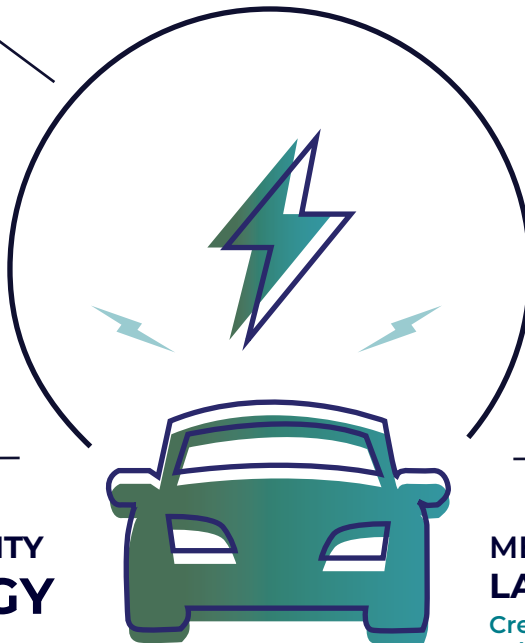
Collaboration is core to our DNA, as demonstrated by these state
and regional efforts that promote the adoption of EVs.

WISCONSIN CLEAN ENERGY PLAN PROGRESS REPORT

 Released
in 2024

OFFICE OF SUSTAINABILITY & CLEAN ENERGY

 osce.wi.gov



MEMBER OF THE REGIONAL ELECTRIC VEHICLE (REV) MIDWEST COALITION

Committed to increasing
EV adoption

MEMBER OF THE MULTI-STATE LAKE MICHIGAN CIRCUIT

Creating an EV circuit around
Lake Michigan

WISCONSIN DEPARTMENT OF TRANSPORTATION EV INFRASTRUCTURE RESOURCES

 [EV Infrastructure
Resource Overview](#)

As the first state to develop a technical college system, Wisconsin has more than 100 years' experience training our workforce to meet industry demands.

WISCONSIN WORKFORCE RISES ABOVE THE NATIONAL AVERAGE

Driving our well-qualified workforce is Wisconsin's world-renowned education system that awarded more than 95,000 degrees and certificates last year. With more than 500,000 post-secondary students enrolled in 2024, Wisconsin gives businesses access to a strong, skilled, and sophisticated workforce.

Source: Reporting from the UW System, WAICU, and WTCS

2ND HIGHEST CONCENTRATION

of experienced manufacturing workers in the U.S.

Source: Lightcast 2024 Q4 Dataset

3-4 TIMES

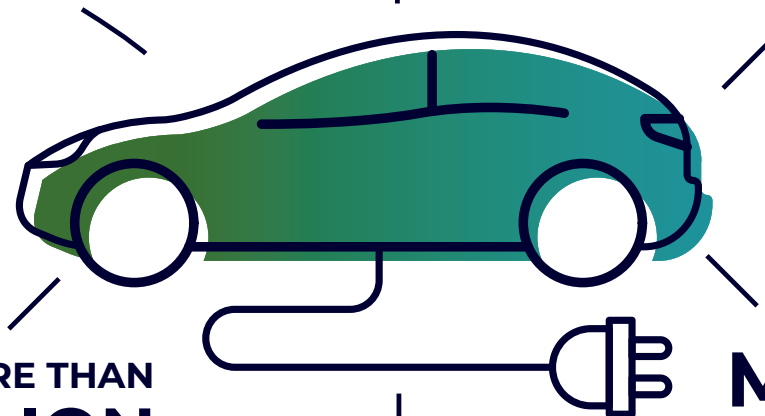
HIGHER EMPLOYMENT
CONCENTRATION
IN CRITICAL EV
INDUSTRY SECTORS
than competing states

Source: Lightcast 2024 Q4 Dataset

WISCONSIN RANKS HIGHER THAN THE NATIONAL AVERAGE IN KEY EV JOB CATEGORIES

including electrical engineers, industrial engineers, and computer programmers.

Source: Lightcast 2024 Q4 Dataset



**SPENDING MORE THAN
\$1.7 BILLION
PER YEAR ON RESEARCH,**
the University of Wisconsin-Madison
ranks sixth in research expenditures
in the U.S.

Source: National Center for Education Statistics
Higher Education Research & Development Survey

**NEARLY
5,000**
engineering degrees and
certificates awarded across
Wisconsin in 2023

Source: U.S. NCES IPEDS

**MADISON
RANKS 3RD IN THE U.S.
AMONG MIDSIZE METRO AREAS
WITH THE MOST TECHNOLOGY
JOBS PER CAPITA**
than competing states

Source: Spanning Industry Research

The Wisconsin Idea, embraced by the University of Wisconsin, signifies that education influences people's lives beyond the classroom.



INDUSTRY AND ACADEMIA ARE WORKING TOGETHER ON THE NEXT GENERATION OF ELECTRIFICATION

As world-leading research institutions, the University of Wisconsin-Madison and University of Wisconsin-Milwaukee are advancing the next generation of energy production, storage and delivery, including battery efficiency, hydrogen fuel cells, fusion energy, and other forms of alternative energy.

>> **Wisconsin Electric Machines and Power Electronics Consortium** – Internationally renowned power electronics and electric machines research group located at UW-Madison with industry-leading members advancing EV including Ford, GM, Boeing, and Harley-Davidson.

>> **Traffic Operations and Safety Laboratory** – UW-Madison is one of 10 U.S. Department of Transportation– designated proving grounds for driverless cars and trucks.

>> **Wisconsin Energy Institute (WEI)** focuses on electricity systems, transportation, and fuels that together account for more than two-thirds of total U.S. energy use.

>> **The Center for Sustainable Electrical Energy Systems at UW-Milwaukee** is exploring methods to make electric power systems more sustainable, cost-effective, and secure through research on energy storage, microgrid systems, and renewable energy sources.

INDUSTRY LEADERS IN ENERGY, ELECTRIFICATION, AND TRANSPORTATION





+1.608.210.6700
wedc.org/contact

LOOK FORWARD >